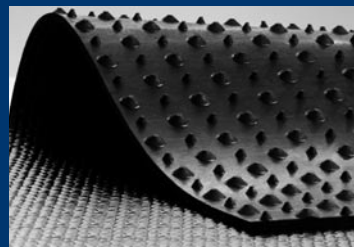


**Huber Technik**  
Vertriebs GmbH

# Seamless Comfort Flooring for

Cubicles | Alleys | Milking Parlor





# Our Company History

---

- 1925** Anton Huber Senior founded the company as vulcanization facility in Erding /Upper Bavaria
- 1952** The company name was changed to „Reifen Huber“
- 1953** The conveyor belt manufacture starts
- 1986** Main focus on conveyor systems and sale of the tire business
- 1990** Manufacture of surface rolls for cow resting cubicles
- 1995** Market launch of the „soft bed system“ with top cover made by „Reifen Huber“
- 1999** The company name changed to „Huber Technik“
- 2002** The Huber Technik marketing company was founded
- 2003** Comfort Roll N 20  
Alley Roll N 15 plus
- 2004** Comfort Roll N 25 XXL  
Top Cover 4 G
- 2007** Alley Roll N 18
- 2008** Comfort Roll N 33 XXL

Since 1990, we became Europe’s leader in specifically animal-friendly, seamless rubber floorings. We manufacture our comfort rolls and top covers from high-quality new rubber material in Erding/Upper Bavaria.





# What should one consider when selecting floor surface materials for a resting cubicle?

## Healthy joints:

Extreme softness does not automatically provide healthy joints. The comfort rolls N 20 and N 25 XXL achieve maximum values for healthy joints. Watch for the joint valuation in the test reports published by the German Agricultural Society, the DLG:

<b>Comfort Roll N 20</b> (DLG Test Report 5439 F)	in 87.3 % of the cases, the joints show no abnormalities, no extreme changes
<b>Comfort Roll N 20/N 25 XXL</b> (DLG Test Report 5439 F)	in 90.6 % of the cases, the hocks show no abnormalities, no severe changes

► *Even softer mattings cannot demonstrate better results.*

## Durability/permanent deformation:

Softness and stability do not always agree. In long-term applications, many products lose their original shape. They form indentations or stretch (= permanent deformation). Pay attention to the DLG test results about long-term uses:

<b>Comfort Roll N 20</b> (DLG Test Report 5378)	++ no significant permanent deformation
<b>HT Soft Bed Standard</b> (DLG Test Report 5804 F)	++ no significant permanent deformation
<b>HT Soft Bed XXL</b> (DLG Test Report 5807 F)	++ no significant permanent deformation
<b>HT Latex Mattress 3 G</b> (DLG Test Report 5808 F)	++ no significant permanent deformation

► *Compare for yourself the test results with those of other products!*

In thin cover sheets, look for materials that are tear resistant. Have them show you the DLG test results.

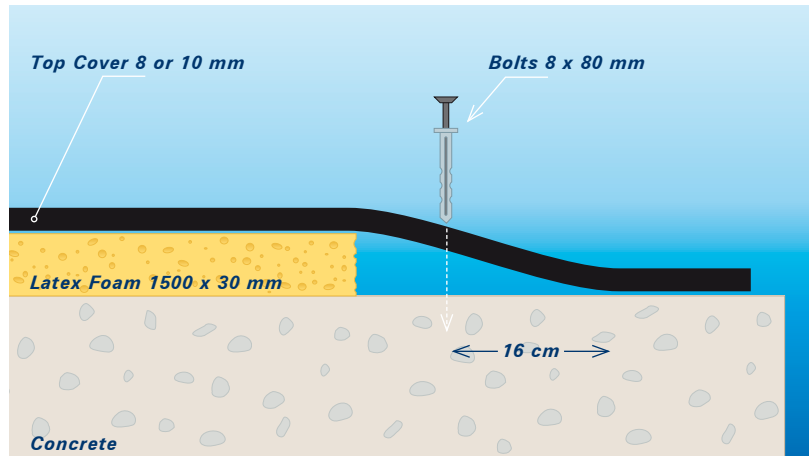
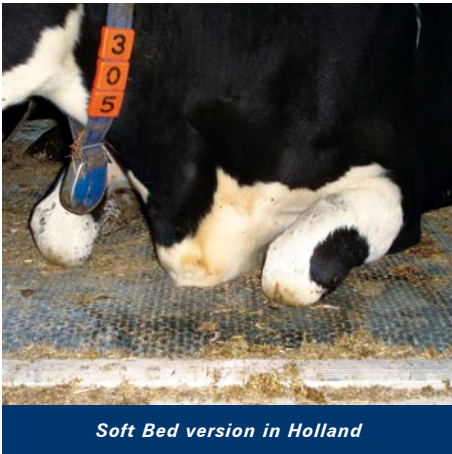


*As soft as you desire:  
Soft Bed Systems / Latex Mattresses*

## Soft Bed HT Standard



*(compression  
and elasticity)*



The latex underlay used today is significantly stronger, more form-stable, and more durable than polyurethane rebond foam of earlier soft bed generations. This creates a clean finish without the use of sealant strips! In this model, the top cover is anchored with bolts to the concrete floor on both sides of the latex pad every 10 cm away from the rubber edge.

**Elasticity / compression:** ++ acc. to DLG report 5807F (21.8 mm)

**Width:** Top Cover 180/200 cm,  
latex underlay 150/170 cm

**Length:** 5-50 m

**Thickness:** approx. 40 mm  
(30 mm latex + 8/10 mm top cover)

**Fastening:** Anchor bolts approximately every 40 cm on both sides of the cover with a minimum distance of 10 cm to the edge of the top cover



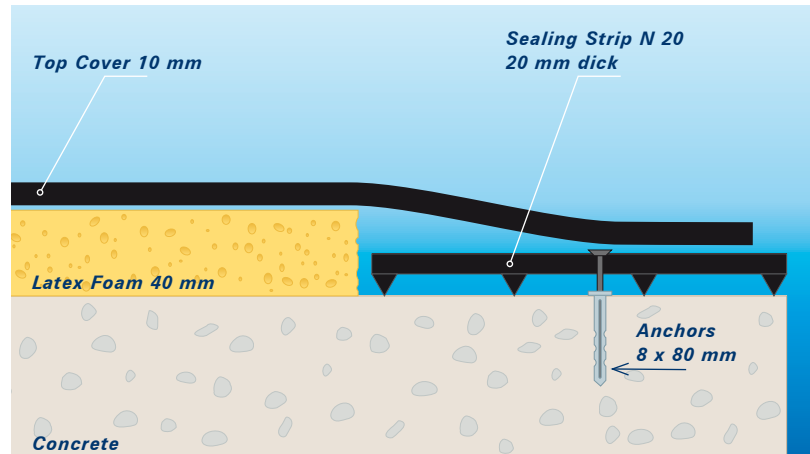
(compression,  
elasticity,  
permanent wear  
resistance)



## Soft Bed HT XXL



Cows in Bavaria enjoy superb comfort



10 mm thick full rubber top cover with fabric liner + a 40 mm thick latex underlay provide a top notch resting comfort.

The XXL model is framed on both sides with soft rubber sealing strips (10 cm in front and 20 cm in back).

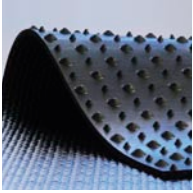
**Elasticity:** ++ acc. to DLG report 5807F (26.8 mm)

**Width:** 180/200 cm top cover,  
150/170 cm latex core

**Length:** 5-50 m

**Thickness:** approx. 50 mm  
(40 mm Latex + 8/10 mm surface cover roll)

**Fastening:** Front: Anchor bolts approximately every 30-40 cm through top cover and sealing strip  
Back: Fasten sealing strips with anchor bolts approximately every 40 cm. The top cover lies loosely on top.



**Comfort Rolls N 20/N25 XXL:**  
*practical, comfortable, and robust*

## Comfort Roll N 25 XXL



(BTS Cattle)

1/05 BTS-Rindvieh



*The 25 mm thick Comfort Roll  
installed in Denmark*



Your cows rest more comfortable on this soft roll N 25 XXL than in the pasture. The carpal joints are unburdened to an optimum. Higher milk production and healthier joints are not yet proven or even guaranteed on softer mattresses.

These 25 mm thick rolls offer an indestructible resting comfort.

**Elasticity / compression:** + acc. to DLG report 5439 F (11.8 mm)

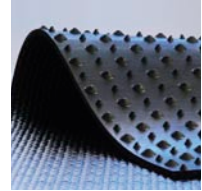
**Width:** 180 cm

**Length:** 5-50 m

**Thickness:** 25 mm, 12 mm of it with a nap profile on the underneath

**Fastening:** in the front 1 to 3 anchor bolts or screws per cubicle

*Comfort Rolls N 20/N25 XXL:  
practical, comfortable, and robust*



## Comfort Roll N 20



The Comfort Roll N 20 with the typical nap profile on the underside offers great resting comfort.

Even in deep straw cubicles, the Comfort Roll N 20 lowers the effort of care.

**Elasticity / compression:** + acc. to DLG report 5378 (10.7 mm)

**Width:** 160 / 170 / 180 / 190 / 200 cm

**Length:** 5-50 m

**Thickness:** 20 mm, 10 mm of it with a nap profile on the underneath

**Fastening:** in the front 1 to 3 anchor bolts or screws per cubicle

As soft as you desire:  
Soft Bed Systems / Latex Mattresses

## Latex Mattress 3 G



3 mm mattress top cover with extra strong fabric combined with a 30 mm latex underlay. The fabric must provide durability and stability in thin covers. The rubber surface serves as wear and tear layer. Latex mattresses have the latex underlay wrapped behind the surface cover roll. There should be no hollow space. This prevents the surface cover from strong folds.

**Tear-resistance:** ++ 30,30 N/mm<sup>2</sup> engthwise /  
17,25 N/mm<sup>2</sup> diagonally

**Elasticity:** ++ (22 mm)

**Width:** 200 cm top cover,  
180 cm latex core

**Length:** starting at 100 m

**Thickness:** approx. 33 mm (30 mm latex + 3 mm top cover)

**Fastening:** Back and front with plastic tracks.

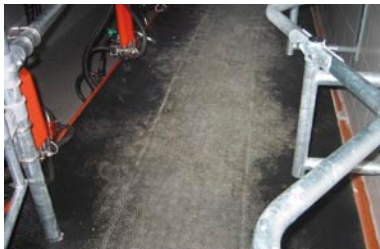
*Milking Parlor Roll N 15:  
seamless, clean, and comfortable*



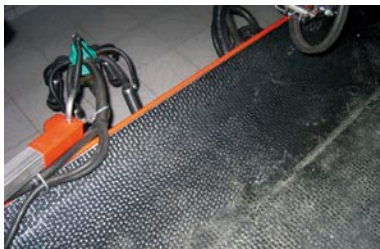
## Milking Parlor Roll N 15



The finish to the milking pit makes cleaning easier.



The cut-out on the outside wall serves drainage purposes.



The 5 mm deep nap profile on the underside allows water to drain and provides the claws with grip.



This surface cover is only fastened at one side of the roll.

**Width:** 50-300 cm

**Length:** 5-70 m

**Thickness:** 15 mm, 5 mm of it with a nap profile on the underneath

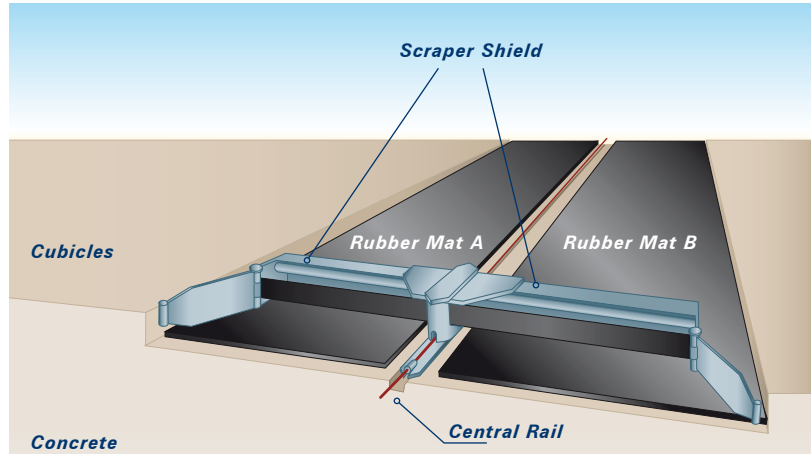
**Fastening:** On the side of the milking pit with approx. 1 anchor bolt per one running meter.



**Alley Roll N 18:**  
*Simple and seamless-clean*

## Alley Roll N 18

---



The 18 mm thick alley roll offers great elasticity and is sound for walking. It is also suitable for seamless floor covering in tie-stalls. The weight remains on the concrete preventing damage to the edges of the rubber flooring.

**Width:** 50-300 cm

**Length:** 5-70 m

**Thickness:** 18 mm, 5 mm of it with a nap profile on the underneath

**Fastening:** only in the outer one third of the alley with 1 anchor bolt per running meter.



## Are you curious? You want to know more?

---

### **What is rubber?**

Today, the word rubber denotes many synthetic materials with elastic properties in addition to natural rubber. Rubber has the ability to cross-link under heat and high pressure. This process provides rubber with the desired and final form. This rubber-specific cross-linking ability is called vulcanization. This process happens only once and it cannot be reversed.

### **Is it new rubber or a rubber regenerate?**

Vulcanized rubber cannot be melted and newly pressed. It can only be broken up with a high amount of energy. Regenerates come mainly from broken up old tires. They have little binding strength left (ability to cross-link). In order to re-shape them, bonding agents must be used. Regenerates are primarily suitable for relative hard, large-volume components.

### **Is it natural rubber or a tire mixture?**

Huber Technik uses only new tire rubber, with a minimum of 90 % of it having not been vulcanized (new rubber). Tire mixtures contain valuable additives, which assure age-resistance. Lower

priced natural rubber mixtures do not contain those stabilizers. Therefore, the influence of light and air (ozone) easily makes them brittle. A high specific weight ( $>1.2$ ) is an indicator for a high amount of fillers (chalk) in the rubber compound. Fillers make the compound heavier and cheaper. A high amount of filler is not an advantage for a product's elasticity and durability.

### **What does wear-and-tear-resistance mean?**

To determine wear-and-tear ability of rubber products, tear resistance, stretching ability at the breaking point, and abrasions are primarily examined. These criteria are clearly superior in new rubber.

### **Why do you need a inner liner of fabric?**

Coverings made of high-quality new rubber must not be very thick in order to offer elasticity, comfort, and durability. The fiber insert made of polyamide polyester stabilizes surface coverings and minimizes rubber-specific stretching. In thin surface covers, the fiber must carry the load. The rubber provides solely a protective surface and wear-and-tear protection.

**Production:**

Huber Technik GmbH & Co. KG  
Robert-Bosch-Straße 8  
D-85435 Erding  
Tel. +49(0)8122/8690  
Fax: +49(0)8122/869120

**Information:**

Huber Technik Vertriebs GmbH  
Brunnenbreite 3, Deiderode  
D-37133 Friedland  
Tel. +49(0)5504/949160  
Fax: +49(0)5504/949159  
E-Mail: [info@huber-technik.de](mailto:info@huber-technik.de)  
[www.huber-technik.de](http://www.huber-technik.de)

**Our distributors::**

Company stamp



▶ **Order your free DVD!**